



SCHWEIZERISCHE NATIONALBANK  
BANQUE NATIONALE SUISSE  
BANCA NAZIONALE SVIZZERA  
BANCA NAZIUNALA SVIZRA +

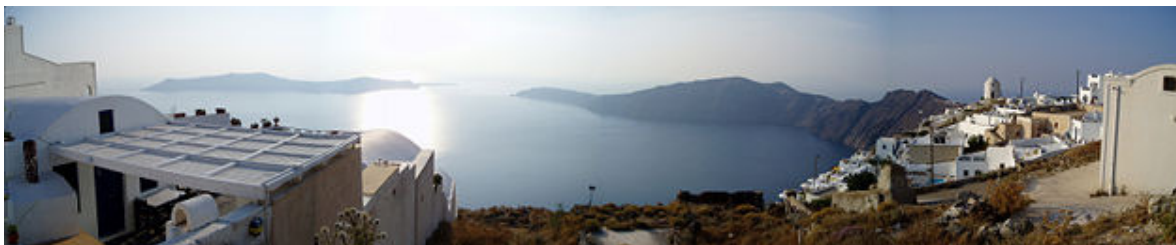
**IMOP**

## **6<sup>th</sup> Workshop on Dynamic Macroeconomics**

**Santorini, Greece, 3-4 October 2008**

**Local Information**

## About Santorini



Santorini is a small, circular archipelago of volcanic islands located in southern Aegean Sea, about 200 km south-east from Greece's mainland. It is also known as Thera (or Thira). It is the southernmost member of the Cyclades group of islands, with an area of approximately, and in had an estimated

population of 13,600. Santorini is essentially what has been left from an enormous volcanic explosion which destroyed the settlements thereon and led to the creation of the current geological caldera.

A big central lagoon, more or less rectangular and measuring about 12 km by 7 km, is surrounded by 300 m (984 ft) high, steep cliffs on three sides. The island slopes downward from the cliffs to the surrounding Mediterranean sea. On the fourth side, the lagoon is separated from the Mediterranean by another much smaller island called Therasia. The lagoon merges with the sea in two places, in the northwest and southwest. The water in the centre of the lagoon is nearly 400 m (1,300 ft) deep, thus being a safe harbour for all kinds of ships. The island's harbors are all in the lagoon and there are no ports on the outer perimeter of the island. The island's capital, Fira, clings to the top of the cliff looking down on the lagoon.



It is the most active volcanic centre in the South Aegean Volcanic Arc, though what remains today is largely a water-filled caldera. The name of Santorini was given to it by the Latin empire in the thirteenth century and is a reference to Saint Irene. Before then it was called Kallistē ("the most beautiful one"), Strongylē ("the circular one"), or Thera.

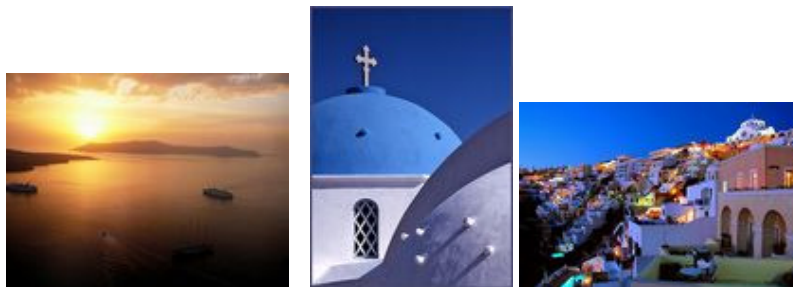


The island was the site of one of the largest volcanic eruptions in recorded history when it erupted cataclysmically some 3,500 years ago, at the height of the Mycenaean epoch. The eruption left a large caldera surrounded by volcanic ash deposits hundreds of feet deep and, according to a theory, its effects may have indirectly led to the collapse of the Minoan civilization on the island of Crete, 110 km (70 mi) to the south, due to a gigantic tsunami. Another popular theory holds that the Thera eruption is the source of the legend of Atlantis

## Landscape and Villages

Santorini island cradles a rich variety of landscapes and villages. The traditional architecture in the small village of Mesa Gonia containing a mixture of ruins from the 1956 earthquake and restored villas as well as a winery at the foot of the settlement. Pyrgos is another notable village set inland with its grand old houses, remains of a Venetian castle and several Byzantine churches.

**Thira** is the fiery capital with Venetian and Cycladic architecture. Pay a visit to the Archaeological Museum, where the story of Akrotiri and other ancient settlements is vividly told through a stunning collection of Neolithic and Bronze Age artifacts.



Special ticketing package for the Archaeological Museum the Museum of Prehistoric Thera.



Walking along a path about 20 minutes will bring you to **Imerovigli** where you can take in the magnificent views of the island's unique scenery from the tiny town.

On the northern part of island is the quintessentially Santorinian town of Oia. Santorini's sunsets, as viewed from Oia, are reputed to be among the world's most beautiful.



### Transportation on the island

The main bus stop of Santorini is located at Thira where you can catch a bus to almost anywhere on the island or alternatively you may call a taxi from your hotel. The price is fixed and it depends on the distance covered i.e if you wish to go to Akrotiri you may pay 20€ -25€ approx. For smaller distance (i.e for Kamari or Perivolos) you should pay between 10-15€ approx.

### Other interesting places

- Pyrgos - highest point on the island; picturesque monastery and streets.
- Perisa -with well organized beach
- Megalochori -Traditional Village with a lot of old white cycladic churches.
- Akrotiri -Visit the archeological site of Aktotiri (due to an accident the facilities are closed for the public). The excavations brought to light multi-level buildings and masterpiece-wall paintings, were conducted by the archaeologist Spyridon Marinatos, a professor at the University of Athens. Akrotiti settlement is one of the best preserved all over Greece.
- **For swimming** you may go to Kamari (black sand with deep waters), Vourvouros, Perissa, Perivolos, Red Beach (access after walking for 10 minutes)



## **Weather**

Like other Cycladic Islands, Santorini Greece has a wonderful climate. holidays. In the summertime, the weather in Santorini Greece is hot and dry (30°-35° C). During the evenings, because cool breeze coming from the sea, we recommend a light jacket.

## **Workshop Venue**

At Santorini Palace Hotel venue room. An overhead projector or LCD projector will be available for participants' use

## **Local Contact**

Should you need any further assistance **during** your stay in Santorini, please contact:

**Maria Zanti (leave a message at the reception)**  
**Hotel Santorini Palace: +30 22860 22771**

## **Accommodation**

**Accommodation has been reserved at the following two hotels:**

- **Hotel Santorini Palace**



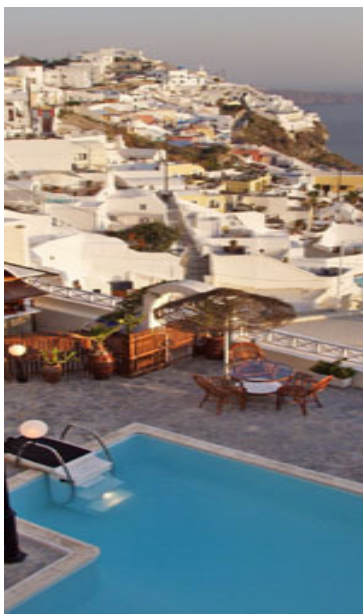
Fira, Santorini  
Tel: +30 22860 22771, 22781  
Fax: +30 22860 23705  
Email: info@santorinipalacehotel.gr

The hotel is situated at a distance of 7 km from the airport and 12 km from the

Athinios port. Santorini Palace is an A' Class Hotel in Fira, within a walking distance from the breathtaking caldera, closed to the center of Thira.

More information can be found at <http://www.santorinipalacehotel.gr>

- Hotel Nomikos Villas



Firostefani  
Tel: +30 2286023887  
Fax: +30 22860 23666  
Email: [nomikos@san.forthnet.gr](mailto:nomikos@san.forthnet.gr)

Nomikos Villas is an A' class Hotel in Firostefani, with view of the Caldera and Volcano.

It is approximately 15 minutes walking distance from the Hotel Santorini Palace where the Workshop will take place.

More information can be found at <http://www.nomikosvillas.gr>

Please note that the locals do not use detailed address for both hotels.

**Funding (FOR DETAIL INFORMATION PLEASE REFERRED TO THE FUNDING INFORMATION PACKAGE)**

- Economy class airfare to and from Greece, airfare from Athens to Santorini and back, ferry or high speed ticket and local transportation related expenses i.e taxi payments (to/from the airport to/from Pireaus) will be covered for those participants who have been offered funding. In order to claim reimbursement, participants must fill in the expense claim form (copies will be distributed during the workshop) and send it together with their ORIGINAL receipts within 10 days following the event, to the following address:

MARIA ZANTI  
IMOP Department of Economics  
AUEB  
76, Patission Str.  
10434 Athens - Greece

- 3 nights hotel accommodation (2, 3 and 4 October) have been booked for all participants.

- **Up to 3 nights accommodation in Santorini including breakfast will be covered for all participants who have been offered funding. Personal expenses such as extra person/night, telephone, mini-bar, pay t.v. etc. will not be reimbursed and should be paid by participants upon check-out.**
- **Meals, lunches and coffee breaks will be provided during the conference. Personal relative expenses will not be reimbursed.**

## **Meals**

You should take breakfast at your hotel each morning. Lunches will be offered during the workshop at the hotel. Further details with regards to dinner and meals arrangements will be provided closer to the date of the event.

Special dietary requests can be accommodated **if requested in advance**.

## **Transportation**

You may travel to Santorini either by ferry (two types) or by plane. When you arrive at Thira you should take a taxi to hotel (12€-15€ approx.) or the local bus from the harbour (if you are travelling with a ferry).

### **1. Traveling by Ferry (Port of Piraeus)**

- The **Athens Airport “Eleftherios Venizelos”** (further information may be found at [www.aia.gr](http://www.aia.gr)) is situated approx. 1 ½ hours from the Port of Piraeus (via Attiki high speed road) where you catch the ferry or high speed to Santorini.
- From there, the journey to Santorini by ferry (Blue Star ferries) will take about 7 1/2 hours and with high speed ferry will take approx. 4 hours (High Speed ferries).
- All ferries to Eastern Cyclades depart from **gate E7** (KALLIMASSIOTIS-TZELEPIS Coasts) in the main port of Piraeus (Please note that it will take 15 minutes walking from the central train station of Piraeus to gate E7. If you take the E96 bus from the airport it will leave you closer).

**Please see the appendix I for details of how to reach the port from the airport**

- You are able to pre-book your tickets for the Santorini. Please see Appendix II for the ferries Timetables and other details.

You may pre-book your ferry tickets from the following companies:

Hellenic Seaways (for high-speed ferry): Telephone for reservations is +30 210 41 99 000, <http://www.hellenicseaways.gr>  
Blue Star Ferries (for normal ferry): Telephone for reservation is +30210 8919800 <http://www.bluestarferries.gr>

## **2. Traveling with plane**

You may travel to Santorini by plane using one of the two airlines traveling there and pre-book your ticket at:

Olympic Airlines: Telephone for reservations is +30 210 9666666  
[www.olympicairlines.com](http://www.olympicairlines.com)

Aegean Airlines: Telephone for reservations is +30 210 6261000  
[www.aegeanair.gr](http://www.aegeanair.gr)

**Please see Appendix III for Airplane Timetable**

**NOTE:**

**You are highly advised to pre-book your tickets as soon as possible. Santorini is considered a high season tourist destination all year round.**

**Please remember to keep all receipts, as it may be difficult to obtain reimbursement without them.**

## **Currency**

There are cash machines available in Santorini although it is advisable to bring a small amount of Euros with you.



**APPENDIX I**

**Bus Transfers to and from Port Piraeus and the Airport**

**To travel directly from the airport to the port:**

- **Metro:** You may take metro from the airport change to Monastiraki station take the Green Line towards Piraeus, and then walk about 15 minutes to gate E7.

**Cost:** To use the Metro from Airport to Piraeus a ticket costs 6€ and is valid for 90 minutes since cancellation on all public transport means (buses, trolley-buses and other metro lines).

- **Line X96** Piraeus - Airport Express travels between the airport and the Port. The journey takes approximately 1 ½ hours according to traffic. Participants can use this line to get to Piraeus port, and then go to Gate E7 (KALLIMASSIOTIS-TZELEPIS Coasts). The gate is 15 minutes walking from metro, but is much closer if you take the bus.

**Cost:** For Express Lines X96, a ticket costs 3.20€ and is valid for 24 hours on all public transport means (buses, trolley-buses and metro excluding the Doukissis Plakentias-Airport part). You may buy this ticket from the bus driver, all metro stations and public transport ticket outlets.

**Bus Transfers to and from the Airport and Athens (for those staying overnight in Athens)**

**If you are staying over night in Athens and then catching the ferry:**

- **Line X95** Syntagma Square - Airport Express has its departure point at the center of Athens (Syntagma Square) and terminates at the airport. The journey takes approximately 40 minutes – 1 hour according to traffic.

Detailed information on Line X95 route from AUTO (Athens Urban Transport Organisation, <http://www.oasa.gr>)

To reach the port from Syntagma Station you can catch the Metro to Monastiraki station and then take green line to Piraeus).

**Cost:** For Express Lines X95, the ticket costs Euro 3.20 and is valid for 24 hours on all public transport means (buses, trolley-buses and metro). You may buy this ticket from the bus driver, all metro stations and public transport ticket outlets.

Arriving buses disembark passengers at the designated area of the departure level of the Main Terminal Building at the Airport

Express Line X96 Frequency (24hour operation): Piraeus - AirportAlso available at <http://www.oasa.gr>From the Airport to Piraeus

HOUR	MINUTES			
<b>06</b>	30	55		
<b>07</b>	20	40		
<b>08</b>	00	15	30	45
<b>09</b>	00	15	30	45
<b>10</b>	00	15	35	50
<b>11</b>	10	25	45	
<b>12</b>	00	20	35	55
<b>13</b>	10	25	40	55
<b>14</b>	15	30	45	
<b>15</b>	00	20	35	50
<b>16</b>	05	25	40	55
<b>17</b>	10	25	45	
<b>18</b>	00	20	35	50
<b>19</b>	10	25	40	55
<b>20</b>	15	30	50	
<b>21</b>	10	30	50	
<b>22</b>	10	40		
<b>23</b>	10	40		
<b>24</b>	10	40		
<b>01</b>	10	40		
<b>02</b>	05	30		
<b>03</b>	00	30		
<b>04</b>	00	30		
<b>05</b>	00	30		
<b>06</b>	00			

From Piraeus to Airport

HOUR	MINUTES			
<b>05</b>	00	20	40	
<b>06</b>	00	15	30	45
<b>07</b>	00	15	30	45
<b>08</b>	00	15	35	50
<b>09</b>	05	25	40	
<b>10</b>	00	15	35	50
<b>11</b>	10	25	40	55
<b>12</b>	10	30	45	
<b>13</b>	00	15	35	50
<b>14</b>	05	20	40	55
<b>15</b>	10	25	40	
<b>16</b>	00	20	35	50
<b>17</b>	05	25	40	55
<b>18</b>	10	30	50	
<b>19</b>	10	30	50	
<b>20</b>	10	30		
<b>21</b>	00	30		
<b>22</b>	00	30		
<b>23</b>	00	30		
<b>24</b>	00	30		
<b>01</b>	00	30		
<b>02</b>	00	30		
<b>03</b>	00	30		
<b>04</b>	00	30		

Express Line X95 (24hour operation): Syntagma – AirportAlso available at <http://www.oasa.gr>From Airport to Syntagma

HOUR	MINUTES				
<b>05</b>	30				
<b>06</b>	15	45			
<b>07</b>	08	24	40	55	
<b>08</b>	10	25	35	50	
<b>09</b>	05	20	35	45	
<b>10</b>	00	15	30	45	55
<b>11</b>	10	25	40	55	
<b>12</b>	05	20	35	50	
<b>13</b>	05	20	30	45	
<b>14</b>	00	15	25	40	55
<b>15</b>	10	25	40	50	
<b>16</b>	05	20	35	45	
<b>17</b>	00	15	30	45	
<b>18</b>	00	10	25	40	55
<b>19</b>	10	20	35	40	50
<b>20</b>	00	05	15	20	30 35 45
<b>21</b>	00	15	25	30	40 55
<b>22</b>	05	20	35	45	50
<b>23</b>	05	15	30	40	55
<b>24</b>	05	15	30	45	55
<b>01</b>	10	25	40		
<b>02</b>	00	15	30	50	
<b>03</b>	05	25	40	55	
<b>04</b>	15	30	50		
<b>05</b>	10	50			

From Syntagma to Airport

HOUR	MINUTES				
<b>04</b>	30				
<b>05</b>	10	25	40	50	
<b>06</b>	00	08	15	23	30 38 45 53
<b>07</b>	00	15	25	40	55
<b>08</b>	10	25	35	50	
<b>09</b>	05	20	35	45	
<b>10</b>	00	15	30	45	55
<b>11</b>	10	25	40	55	
<b>12</b>	10	20	35	50	
<b>13</b>	05	15	30	45	
<b>14</b>	00	15	30	40	55
<b>15</b>	10	25	35	50	
<b>16</b>	05	20	35	50	
<b>17</b>	00	15	30	45	
<b>18</b>	00	10	25	40	55
<b>19</b>	10	20	35	50	
<b>20</b>	05	20	30	45	55
<b>21</b>	10	25	40	55	
<b>22</b>	05	20	30	45	55
<b>23</b>	05	20	35	50	
<b>24</b>	05	20	35	55	
<b>01</b>	10	30	50		
<b>02</b>	05	25	40	55	
<b>03</b>	10	30	50		
<b>04</b>	10	50			

**APPENDIX II-FERRIES****TIME SCHEDULE\*****PIRAEUS – SANTORINI**

<i>DAY</i>	<i>TIME</i>	<i>FERRY</i>	<i>COMPANY</i>
<b>THURSDAY</b> <b>2/10/2008</b>	7:25	Blue Star Naxos	Blue Star Ferries
<b>FRIDAY</b> <b>3/10/2008</b>	7:25	Blue Star Paros	Blue Star Ferries

**SANTORINI - PIRAEUS**

<i>DAY</i>	<i>TIME</i>	<i>FERRY</i>	<i>COMPANY</i>
<b>SATURDAY</b> <b>4/10/2008</b>	15.30	Blue Star Naxos	Blue Star Ferries
<b>SUNDAY</b> <b>5/10/2008</b>	7.00	Blue Star Naxos	Blue Star Ferries
	15.30	Blue Star Paros	Blue Star Ferries

1. INFORMATION FOR THE ABOVE MAY BE ALSO FOUND AT

[www.hellenicseaways.gr](http://www.hellenicseaways.gr) Tel: +30 210 4199000

[www.bluestarferries.gr](http://www.bluestarferries.gr) Tel: +30 210 8919800

\* Please note that Hellenic Seaways does not yet announce its timetable after September 7, 2008. Therefore there is no information about the timetable for High Speed boats. Please visit their site after that date, for further information.

2. Changes may occur to the above timetable by the companies.

**APPENDIX III-PLANES**

**NOTE: YOU ARE STRONGLY ADVISED TO BOOK YOUR TICKETS AS SOON AS POSSIBLE AS THE AVAILABILITY MAY BE LIMITED**

**TIME SCHEDULE****ATHENS- SANTORINI**

<b><i>THURSDAY</i></b> <b><i>2/10/2008</i></b>	<b><i>TIME</i></b>				
Olympic Airlines	5:45		12:30	18:25	
Aegean Airlines	5:30	10:30	13:00	17:45	
<b><i>FRIDAY</i></b> <b><i>3/10/2008</i></b>					
Olympic Airlines	5:45			19:20	
Aegean Airlines	5:30	10:30	13:00	17:45	

**SANTORINI - ATHENS**

<b><i>SATURDAY</i></b> <b><i>4/10/2008</i></b>	<b><i>TIME</i></b>				
Olympic Airlines	7:10		19:40	22:35	
Aegean Airlines	6:55	12:00	14:20	19:05	
<b><i>SUNDAY</i></b> <b><i>5/10/2008</i></b>					
Olympic Airlines	7:10		19:40	22:35	
Aegean Airlines	6:55	12:00	14:20	19:05	

1. INFORMATION FOR THE ABOVE MAY BE ALSO FOUND AT  
[www.olympicairlines.com](http://www.olympicairlines.com) Tel: +30 210 96666666  
[www.aegeanair.gr](http://www.aegeanair.gr) Tel: +30 210 6261000
2. Changes may occur to the above timetable by the companies.